

This **Pearson BTEC National Extended Certificate in Information Technology** is equivalent to 1 A Level.

This course has been designed to provide you with an insight into core and specialist units which cover aspects of knowledge, understanding and competency which are necessary for employment within ICT. The course is ideal if you have a keen interest in computers, how they work and their uses. Students will have the opportunity to develop a range of skills and

Entry requirements

The entry requirements for this course are 5 GCSEs at grades 4-9 (or BTEC equivalents) .

Course Content

Year 1

Students undertake the following mandatory units:

- ◆ **Creating Systems to Manage Information** (Externally Assessed Task)
- ◆ **Using Social Media in Business** (Internally Assessed)

Year 2

Students sit their exam and an optional unit

Exam:

- ◆ **Information Technology Systems** (Written Examination)

Plus one optional Unit:

- ◆ **Data Modelling** (Internally Assessed) or
- ◆ **Website development** (Internally Assessed)



Assessment

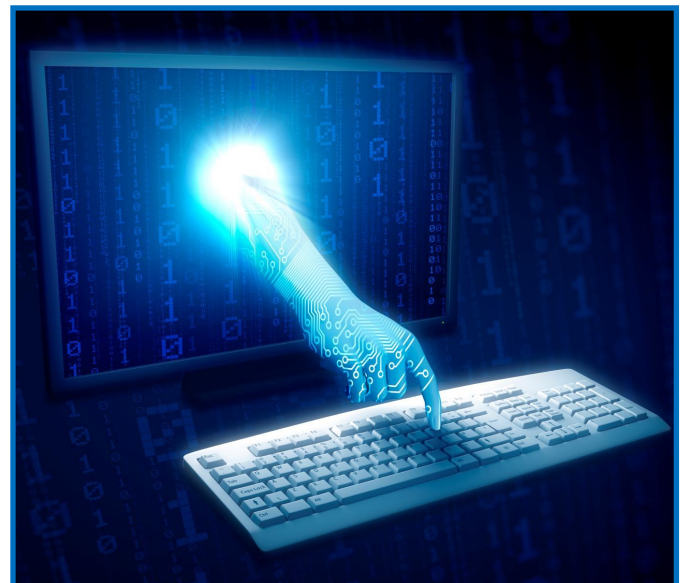
Assessment has changed this year to include more externally assessed units. In Year 1 there will be an on screen task which is set and marked by the exam board. In addition there will be a project assignment set and marked internally.

In Year 2 there will be another internally assessed project assignment followed by a final written examination which is set and marked by the exam board.

The weightings for assessment are 58% external, 42% internal.

Approach to Teaching and Learning

- ◆ Lectures
- ◆ Practical activities
- ◆ Group work/ Class discussion
- ◆ Individual research
- ◆ Workshops
- ◆ Visits
- ◆ Individual reviews with your Tutor



Future Prospects

This course has been designed to give students the opportunity to enter employment in the IT sector and to progress to vocational higher education qualifications. Previous students have taken up places at university on courses such as Information Technology Management for Business and Computer Studies.